



PowerMoniSpot

Save resources and money with the groundbreaking **clamp-on sensor** for measurement of precise power consumption, monitoring and AI generated alarms.



Know the actual power consumption of your technical installations

Estimations, gut feelings and speculations are expensive when it comes to energy management. In order to reduce energy consumption, decisions need to be based on data. Monitor your electronic devices with PowerMoniSpot – the wireless clamp-on sensor that, when calibrated, measures actual power consumption and saves you time, resources and money.

Self-learning alarms at your service

Buildings are full of technical installations that needs to be inspected routinely. With PowerMoniSpot this becomes needless, thanks to self-learning AI alarms, that warns you in case of overconsumption, irregularities or defects in your units. You'll even receive an alarm, before any damage happens. Automated and preventive alarms give you more freedom to solve other important tasks throughout the day.

Make your bottom-line happy!

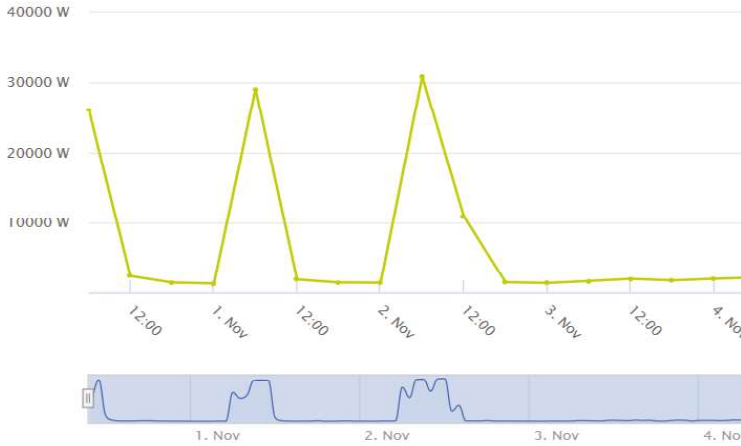
Saving resources is important. So is saving money. Running surveillance on the technical installations in your building, can make your bottom-line happy. ReMoni's solution is cost-efficient. The price is only a fraction of other available solutions on the market.

View data

Units

Type to search units, sensors or tags...

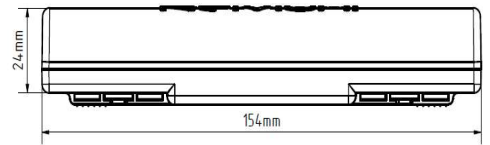
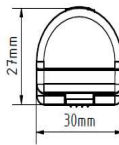
— Main Ventilation MVI – PowerMoni (W)



It's **small, discreet** and **intelligent!** PowerMoniSpot can monitor any device in your building and can be installed in each and every corner providing **solid** results. On the spot.

Time range From To
 31/10/2018 09:36 09/11/2018 09:36

- Installation: Clamp-on outside the cable's double insulation.
- Typical installation time: 1 minute.
- Battery lifetime: ~15 years.
- Cable mounting: Multi-core power cables, 50/60 Hz ($\pm 5\%$), 115-400 V AC.
- Measurement level: Single device
- Coherent solution. PowerMoniSpot transmit real-time data from your energy-using equipment to our cloud-based analytics platform, called ReCalc MoniTor. ReMoni delivers a full scale solution.



ReMoni is all about saving resources!

ReMoni is an award-winning Danish company that develop, design and produce innovative solutions for resource and energy optimization.

With patented clamp-on technology, combined with artificial intelligence and algorithms, ReMoni helps companies, building- and energy managers save money and resources; in an easy, secure and affordable way.

